



# CLEARPOINT MEDICAL®

---

COMPRESSION WEAR

## OUR MISSION

To improve the healing experience through design, production and distribution of quality post-operative compression wear to medical professionals and their patients worldwide with exceptional customer care and value.



# TABLE OF CONTENTS



## BRAS

PAGES 6 - 11  
SIZE CHART PAGE 12



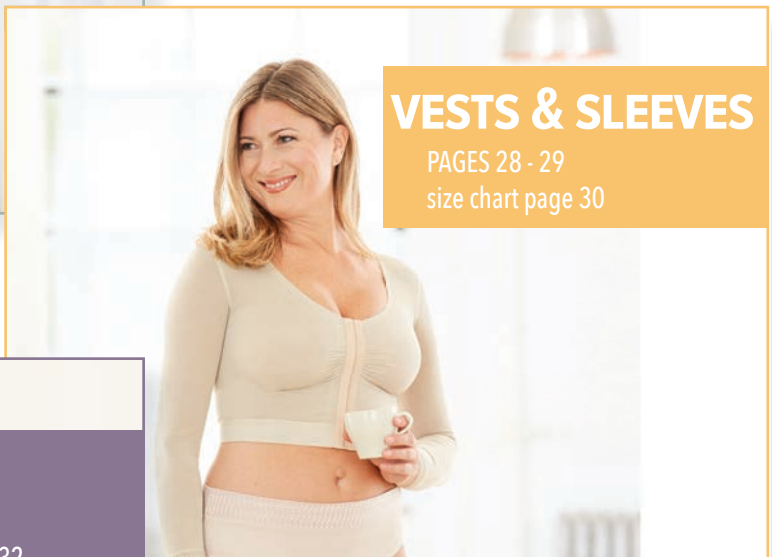
## SHAPEWEAR

PAGE 14 - 24  
SIZE CHART PAGE 22



## BINDERS

PAGE 26  
SIZE CHART PAGE 26



## VESTS & SLEEVES

PAGES 28 - 29  
size chart page 30



## WRAPS

PAGE 32  
SIZE CHART PAGE 32

## MARKETPLACE

PAGE 33

## YOUR CHOICE OF COMPRESSION WEAR FABRICS

Product quality is often linked to fabric composition and compressibility while providing comfort.

Individual preferences - professional and patient - suggests that the fusion of compression and comfort can be achieved using options with different fabric blends. At ClearPoint Medical, this is part of our unique value proposition.

### MICROFIBER

A premium four way stretch, ultra soft microfiber is used in our 700 series style garments including bras, shapewear girdles as well face, chin & neck wraps. The healing and recovery experience wearing microfiber is enhanced without compromising compression. It wicks away moisture keeping the wearer cool and dry.



### POWERNET

Our most popular shapewear fabric, Powernet is known for its compressive capabilities even after long periods of wear. Light and breathable yet robust and comfortable, this fabric delivers an exceptional quality and value proposition. Used in ClearPoint Medical's 300 and 400 series Stage 1 girdles and vests.



### QUILTED NYLON BLEND

Our best selling post-surgical bras feature this soft to the touch fabric delivering light yet very comfortable compression following breast procedures.

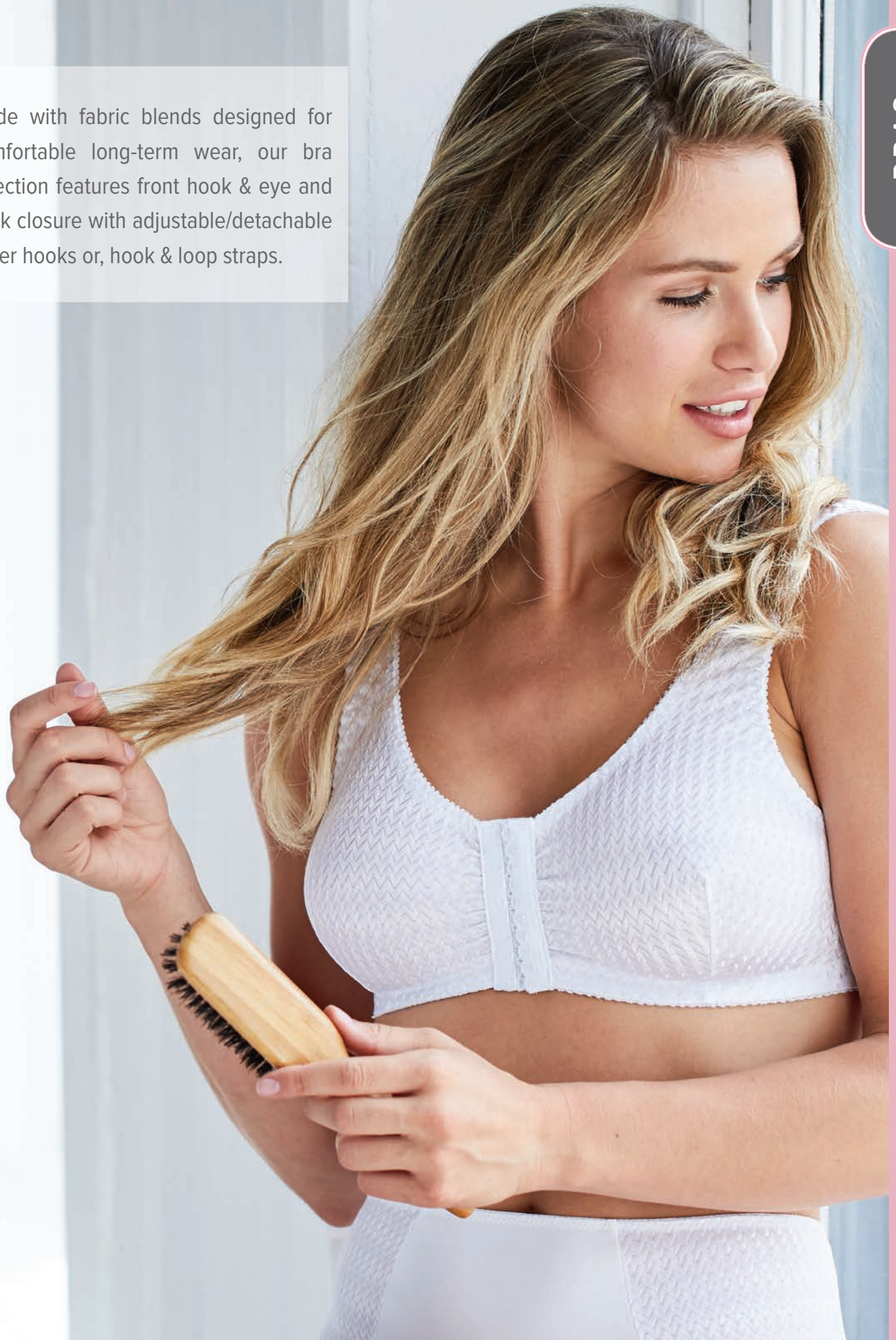


### COTTON

All natural, breathable and cool, this 95-5% Cotton/ Spandex blend is the fabric of choice for sensitive skin. This material is featured in our bras, breast and facial wraps as well as abdominal binders.



Made with fabric blends designed for comfortable long-term wear, our bra selection features front hook & eye and back closure with adjustable/detachable slider hooks or, hook & loop straps.

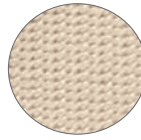


CUPPED BRAS

FRONT CLOSURE WITH PROTECTIVE GUARD

ADJUSTABLE SHOULDER STRAP

45 MM WIDE SOFT MIDRIFF BAND



MICROFIBER

**#710 - ADJUSTABLE MOLDED CUP SUPPORT BRA**

Adjustable slider hook shoulder straps

Three row front hook and eye closure with 2" of adjustability

High back




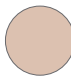


### #711 - ZIPPERED MOLDED CUP BRA

Front zipper closure

Secondary three row hook and eye back closure with 2" of adjustability

Thin adjustable strap

| # Style |  |  |
|---------|---|---|
| 710     | 32-40 B, C, D<br>42-46 C, D   | 32-40 B, C, D<br>42-46 C, D   |
| 711     | 32-38 B, C, D<br>40-46 C, D   | 32-38 B, C, D<br>40-46 C, D   |

Size chart page 12



SEAMLESS CUPS

STRETCH CUPS FIT B-D CUP SIZES

FRONT HOOK & EYE CLOSURE

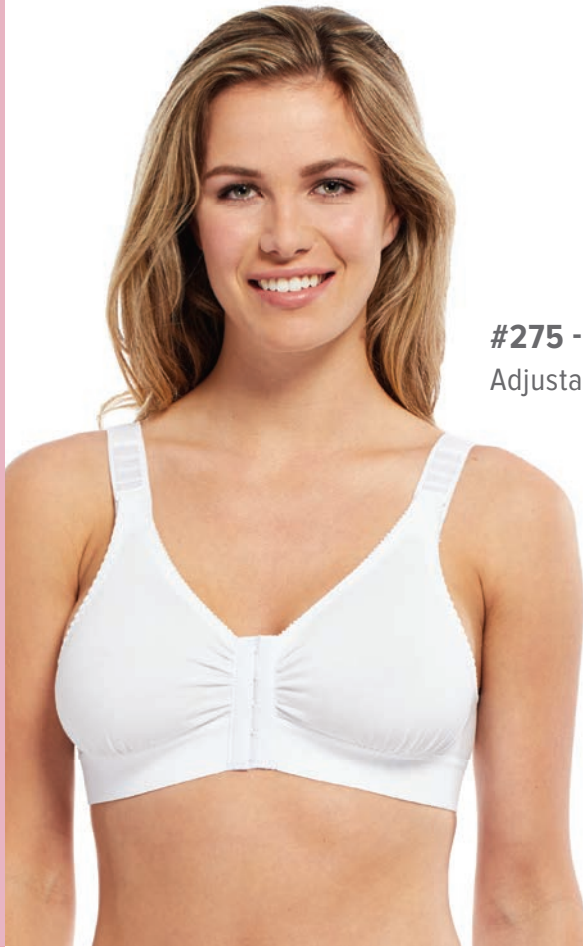
40 MM WIDE MIDRIFF BAND

COTTON / SPANDEX BLEND



**#276 - COTTON COMFORT BRA**

Wide comfort shoulder straps  
Dual pack



**#275 - ADJUSTABLE COTTON BRA**

Adjustable slider hook shoulder straps



| # Style | ●       | ○       |
|---------|---------|---------|
| 275     | 32 - 50 | 32 - 50 |
| 276     | 32 - 44 | 34 - 44 |

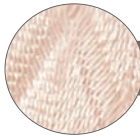
Size chart page 12



STRETCH CUPS FIT B-DD CUP SIZES

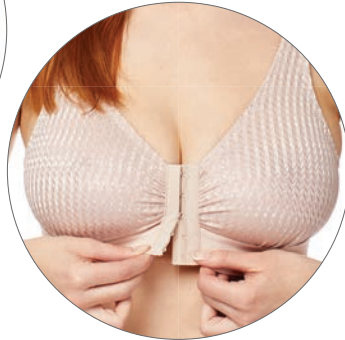
FRONT HOOK & EYE CLOSURE

QUILTED BLEND



**#218 - CLASSIC COMFORT BRA**


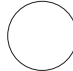
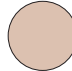
Wide comfort shoulder straps  
Dual pack  
Thin midriff band



**#216 - ADJUSTABLE COMFORTABLE BRA**

40 mm wide midriff band



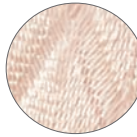
| # Style |  |  |  |
|---------|---|---|---|
| 216     | 32 - 48   | N/A   | 30 - 50   |
| 218     | 32 - 44   | 32 - 44   | 32 - 48   |

Size chart page 12

STRETCH CUPS FIT B-DD CUP SIZES

FRONT HOOK & EYE CLOSURE

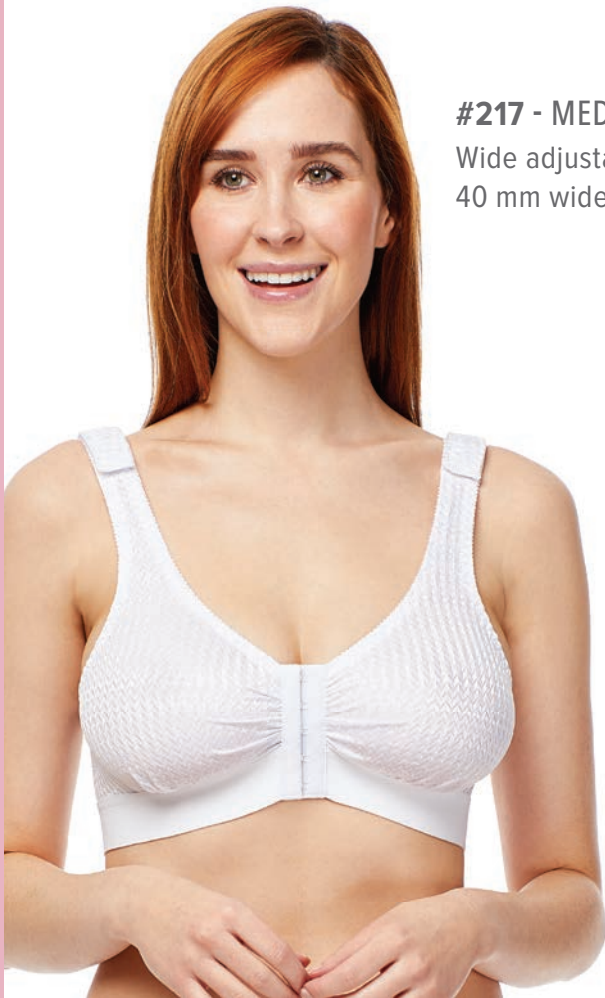
QUILTED BLEND



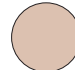



**#220 - CLASSIC COMFORT BRA PLUS**  
Adjustable slider hook shoulder straps  
Thin midriff band



**#217 - MEDICAL COMFORT BRA**  
Wide adjustable hook and loop straps  
40 mm wide midriff band



| # Style    |  |  |  |  |
|------------|--|---|---|---|
| <b>217</b> | 32 - 46  | 32 - 46   | 30 - 46   | N/A   |
| <b>220</b> | 32 - 50  | N/A   | 32 - 50   | 32 - 50   |

Size chart page 12

SEAMLESS CUPS

STRETCH CUPS FIT B-D CUP SIZES

FRONT HOOK & EYE CLOSURE

40 MM WIDE MIDRIFF BAND

COTTON / SPANDEX BLEND



**#277 - MEDICAL COTTON BRA**

Wide adjustable hook and loop shoulder straps



# Style



277

32 - 46

Size chart page 12



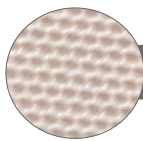
STERNUM COMPRESSION

BACK THREE ROW HOOK AND EYE CLOSURE

ADJUSTABLE STRAPS

40 MM WIDE MIDRIFF BAND

POWERNET



**#312 - STERNUM BRA**



# Style



312

SM - 2XL



|            | SM                  | M                   | L                   | XL                   | 2XL                   |
|------------|---------------------|---------------------|---------------------|----------------------|-----------------------|
| UNDER BUST | 27"-30"<br>68-76 cm | 31"-34"<br>79-86 cm | 35"-38"<br>89-97 cm | 39"-42"<br>99-106 cm | 43"-46"<br>109-116 cm |



#216

#217

#218

#220



#275

#276

#277

|                   | 30                      | 32                      | 34                      | 36                      | 38                      | 40                      | 42                       | 44                        | 46                        | 48                        | 50                        |
|-------------------|-------------------------|-------------------------|-------------------------|-------------------------|-------------------------|-------------------------|--------------------------|---------------------------|---------------------------|---------------------------|---------------------------|
| <b>UNDER BUST</b> | 25" - 27"<br>63 - 68 cm | 28" - 30"<br>71 - 76 cm | 31" - 32"<br>79 - 81 cm | 33" - 34"<br>84 - 86 cm | 35" - 36"<br>89 - 91 cm | 37" - 38"<br>94 - 97 cm | 39" - 40"<br>99 - 101 cm | 41" - 42"<br>104 - 106 cm | 43" - 44"<br>109 - 112 cm | 45" - 46"<br>114 - 117 cm | 47" - 48"<br>119 - 122 cm |

Measure your rib cage directly under your bust. When between sizes, choose the larger size.



#710

#711

|                   | 32                      | 34                      | 36                      | 38                      | 40                       | 42                        | 44                        | 46                        |
|-------------------|-------------------------|-------------------------|-------------------------|-------------------------|--------------------------|---------------------------|---------------------------|---------------------------|
| <b>UNDER BUST</b> | 27" - 30"<br>69 - 76 cm | 31" - 34"<br>79 - 86 cm | 35" - 36"<br>89 - 91 cm | 37" - 38"<br>94 - 97 cm | 39" - 40"<br>99 - 102 cm | 41" - 42"<br>104 - 107 cm | 43" - 44"<br>109 - 112 cm | 45" - 46"<br>114 - 117 cm |

**CUP SIZE**


**To determine cup size, follow instructions below**

1. Band size: Measure your rib cage directly under your bust. When between sizes, choose the larger size.
2. Bust size: Measure completely around the fullest part of your bust
3. Subtract bust size (step 2) from band size (step 1). The difference will determine the cup size.

**Example:**

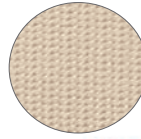
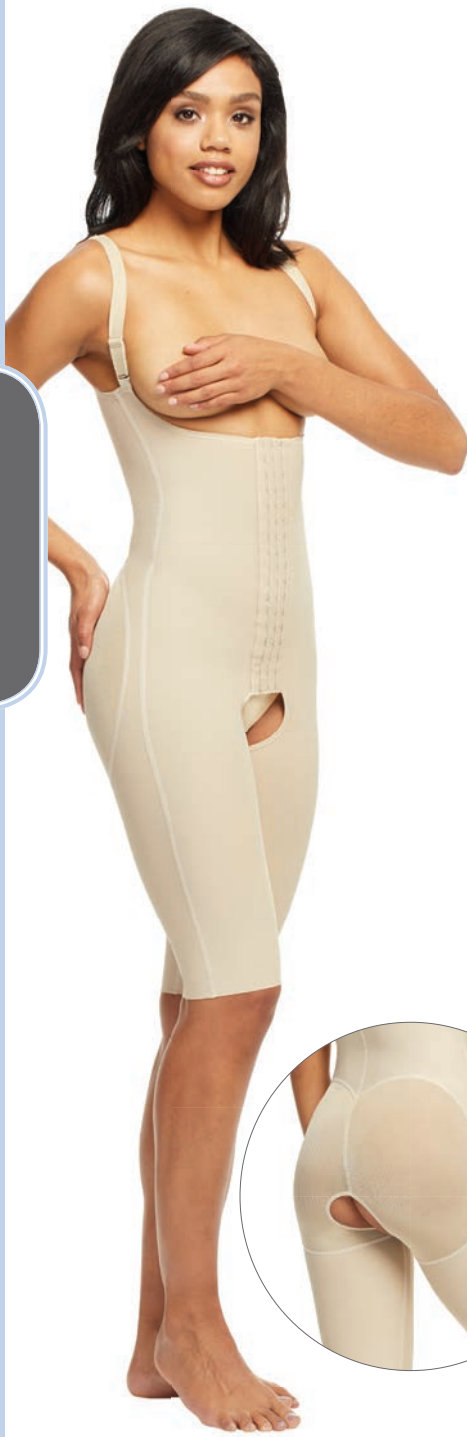
36" - 34" = 2" = B cup

| Cup Size          | B          | C            | D           | DD            |
|-------------------|------------|--------------|-------------|---------------|
| <b>DIFFERENCE</b> | 2"<br>5 cm | 3"<br>7.5 cm | 4"<br>10 cm | 5"<br>12.5 cm |

A woman with short dark hair is smiling and looking to her right. She is wearing a white, form-fitting shapewear bodysuit with a lace trim at the bottom. She is standing in a gym or fitness studio, with a large clock on the wall behind her and a radiator in the foreground. Her hands are resting on her hips.

Shapewear that delivers medical grade compression enhancing the recovery process comfortably while minimizing unwanted side effects.

- ADJUSTABLE SHOULDER STRAPS
- HIGH BACK
- GRIP LACE TRIM
- OPEN CROTCH DESIGN
- SIDE ZIPPERS WITH HOOK AND EYE
- GUARD TAPE
- MICROFIBER



**#750 - MICROFIBER BBL SHAPEWEAR**  
 Above-knee length  
 Non-compressive covered gluteal region

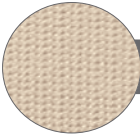
| # Style |  |  |
|---------|---|---|
| 740     | XS - 2XL  | XS - 2XL  |
| 750     | XS - 3XL  | XS - 3XL  |
| 780     | XS - XL   | XS - 2XL  |

Size chart page 22

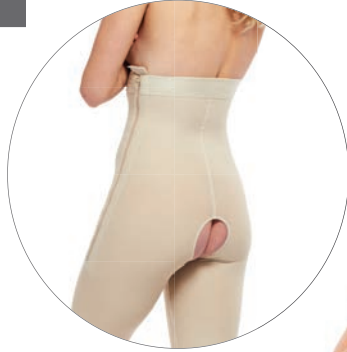
**#740 - ABOVE-KNEE HIGH BACK BODY SHAPEWEAR**  
 Above-knee length

**#780 - BELOW-KNEE HIGH BACK BODY SHAPEWEAR**  
 Ankle length

2" WIDE WAISTBAND  
 OPEN CROTCH DESIGN



MICROFIBER



**#722 - MICROFIBER ABOVE-KNEE SHAPEWEAR**  
 Above-knee length  
 Side zippers with hook and eye guard tape



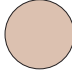

**#724 - ZIPPERLESS MICROFIBER ABOVE-KNEE SHAPEWEAR**  
 Pull on garment - no zippers



**#723 - MICROFIBER CAPRI SHAPEWEAR**  
 Below-knee length  
 Side zippers with hook and eye guard tape



**#721 - MICROFIBER ABDOMINAL BRIEF**  
 Hook & eye crotch closure  
 Side zippers with hook and eye guard tape

| # Style    |  |  |
|------------|---|---|
| <b>721</b> | XS - 3XL  | XS - 3XL  |
| <b>722</b> | XS - 3XL  | XS - 3XL  |
| <b>723</b> | XS - 3XL  | XS - 3XL  |
| <b>724</b> | XS - 3XL  | XS - 3XL  |

Size chart page 22

ADJUSTABLE SHOULDER STRAPS

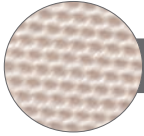
FRONT OFFSET ZIPPER

HIGH BACK

OPEN CROTCH DESIGN

BODY CONTOURING DESIGN ENHANCES THE GLUTEAL REGION

POWERNET



SHAPEWEAR

**#370 - TIMELESS BUTT SHAPER**

Heart-shaped non-compressive covered gluteal region  
Adjustable, elastic gluteal contouring straps  
V-shaped shelf band to achieve desired shape

**#371 - OPEN BUTTOCK SHAPEWEAR**

Open gluteal design with a large opening



| # Style |  |  |
|---------|---|---|
| 370     | XS - 2XL  | XS - 2XL  |
| 371     | N/A   | XS - 2XL  |

Size chart page 22

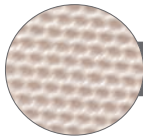


SIDE ZIPPERS WITH HOOK & EYE COTTON GUARD TAPE  
ABDOMINAL INNER PANELS

3" WIDE WAISTBAND

OPEN CROTCH DESIGN

GRIP LACE TRIM



POWERNET

**#440 - ABOVE-KNEE SHAPEWEAR**  
Above-knee length

**#460 - BELOW-KNEE SHAPEWEAR**  
Ankle length



| # Style |  |  |
|---------|---|---|
| 440     | XS - 3XL  | XS - 2XL  |
| 460     | XS - 3XL  | XS - 3XL  |

Size chart page 22

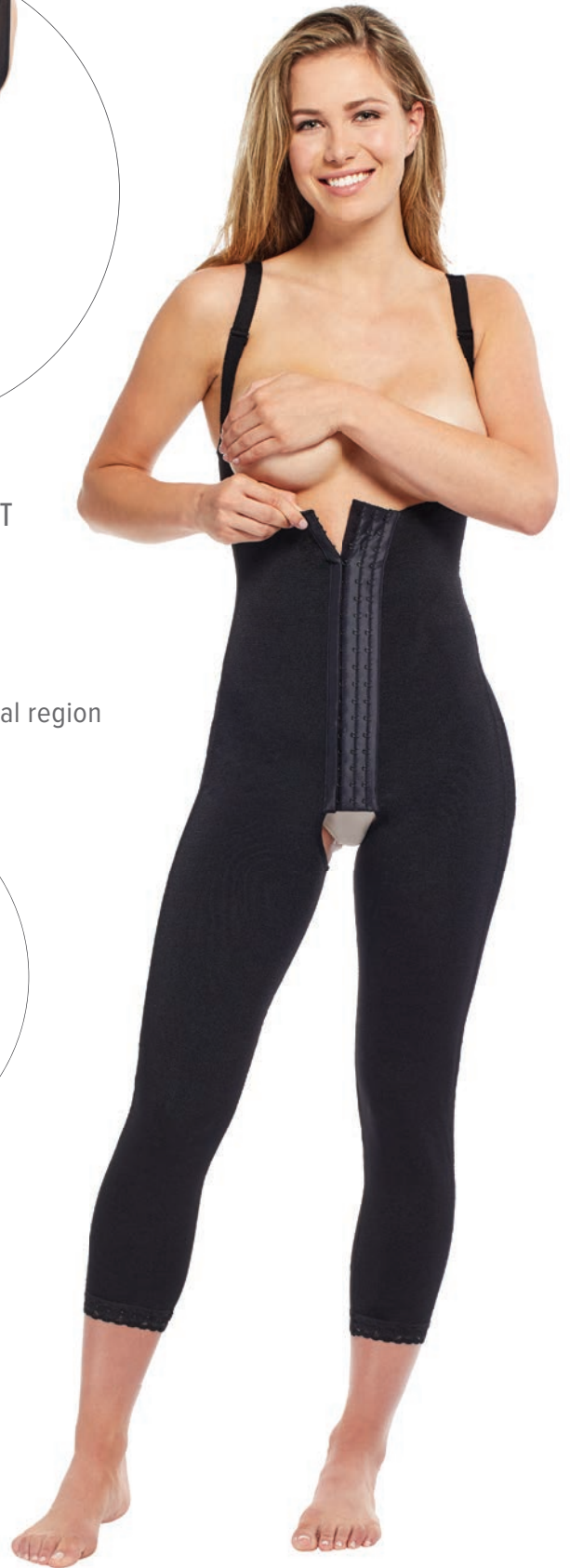
**#822 - CAPRI HOOK AND EYE SHAPEWEAR**

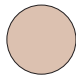

Capri length  
 Open crotch design  
 Non-compressive covered gluteal region



**#830 - ABOVE-KNEE BODYSUIT**

3/4 length sleeves  
 Built in bra  
 Open crotch design  
 Above-knee length  
 Non-compressive covered gluteal region



| # Style |  |  |
|---------|---|---|
| 822     | N/A   | XS - 2XL  |
| 830     | XS - 2XL  | XS - 2XL  |

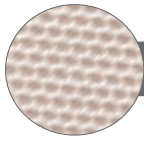
Size chart page 22

THREE ROW HOOK & EYE CLOSURE

HIGH BACK

ADJUSTABLE STRAPS

POWERNET



**#820 - MID-THIGH HOOK AND EYE SHAPEWEAR**

Mid-thigh length

Open crotch design

Non-compressive covered gluteal region

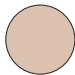


**#810 - HIGH BACK TORSO BRIEF  
HOOK AND EYE SHAPEWEAR**

Hook and eye crotch closure

Off-center hook and eye closure



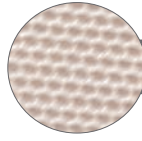
| # Style |  |  |
|---------|---|---|
| 810     | XS - 2XL  | XS - 2XL  |
| 820     | XS - 2XL  | XS - 2XL  |

Size chart page 22

ABDOMINAL INNER PANELS

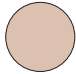

ADJUSTABLE SHOULDER STRAPS

SIDE ZIPPERS WITH HOOK AND EYE GUARD TAPE



POWERNET



| # Style    |  |  |
|------------|---|---|
| <b>341</b> | XS - 3XL  | XS - 3XL  |
| <b>361</b> | XS - 3XL  | XS - 3XL  |

Size chart page 22

**#361 - CLASSIC BELOW-KNEE  
HIGH BACK SHAPEWEAR**

Open crotch design  
Ankle length

**#341 - CLASSIC ABOVE-KNEE  
HIGH BACK SHAPEWEAR**

Open crotch design  
Above-knee length



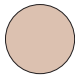

**#320 - TORSO BRIEF**  
Hook and eye crotch closure



**#340 - ABOVE-KNEE BODY SHAPWEAR**  
Grip lace trim  
Open crotch design



**#360 - BELOW-KNEE BODY SHAPWEAR**  
Grip lace trim  
Open crotch design

| # Style    |  |  |
|------------|---|---|
| <b>320</b> | XS - 3XL  | XS - 3XL  |
| <b>340</b> | XS - 3XL  | XS - 3XL  |
| <b>360</b> | XS - 3XL  | XS - 3XL  |

Size chart page 22



#320

#340

#360

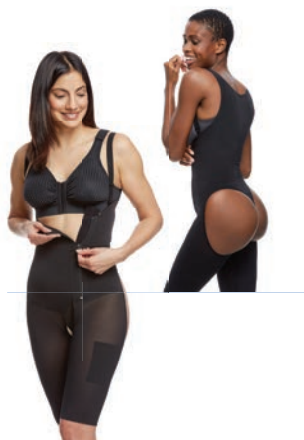


#341

#361



#370



#371



#440

#460



#721



#722

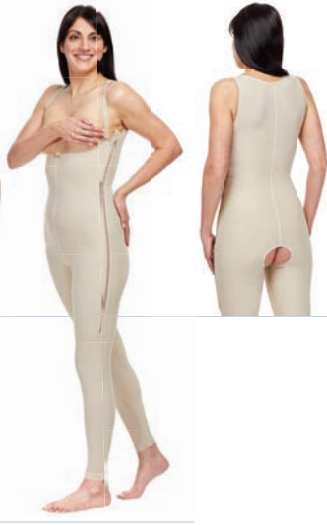
#723



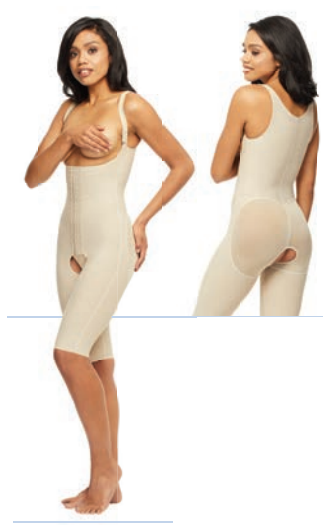
#724



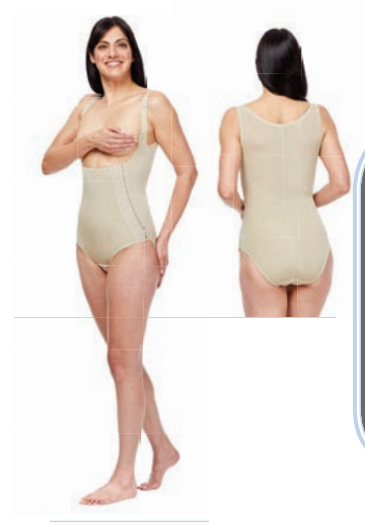
#740



#780



#750



#810



#822



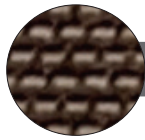
#820



#830

|              | XS                      | S                       | M                        | L                         | XL                        | 2XL                       | 3XL                       |
|--------------|-------------------------|-------------------------|--------------------------|---------------------------|---------------------------|---------------------------|---------------------------|
| <b>WAIST</b> | 20" - 23"<br>51 - 58 cm | 24" - 27"<br>61 - 69 cm | 28" - 31"<br>71 - 79 cm  | 32" - 35"<br>81 - 89 cm   | 36" - 39"<br>91 - 99 cm   | 40" - 44"<br>101 - 112 cm | 45" - 49"<br>114 - 125 cm |
| <b>HIPS</b>  | 30" - 33"<br>76 - 84 cm | 34" - 37"<br>86 - 94 cm | 38" - 41"<br>97 - 104 cm | 42" - 45"<br>107 - 115 cm | 46" - 49"<br>117 - 124 cm | 50" - 54"<br>127 - 137 cm | 55" - 59"<br>139 - 150 cm |

SIDE ZIPPER WITH HOOK AND EYE GUARD TAPE  
COVERED OPEN CROTCH DESIGN



POWERNET

SHAPEWEAR



**#472 - ABDOMINAL GIRDLE**

3" wide waist band  
Above-knee length



**#470 - MALE BODYSUIT**

Wide adjustable hook and loop straps



CLEARPOINTMD.COM

| # Style | ●        | S                                | M                        | L                         | XL                        | 2XL                       | 3XL                       |
|---------|----------|----------------------------------|--------------------------|---------------------------|---------------------------|---------------------------|---------------------------|
| 470     | SM - 3XL | CHEST<br>33" - 36"<br>84 - 91 cm | 37" - 40"<br>94 - 102 cm | 41" - 44"<br>104 - 112 cm | 45" - 48"<br>115 - 122 cm | 49" - 52"<br>125 - 132 cm | 53" - 56"<br>135 - 142 cm |
| 472     | SM - 3XL | WAIST<br>27" - 30"<br>68 - 76 cm | 31" - 34"<br>79 - 86 cm  | 35" - 37"<br>89 - 94 cm   | 39" - 42"<br>99 - 106 cm  | 43" - 46"<br>109 - 117 cm | 47" - 50"<br>119 - 127 cm |
|         |          | HIPS<br>33" - 36"<br>84 - 91 cm  | 37" - 40"<br>94 - 102 cm | 41" - 44"<br>104 - 112 cm | 45" - 48"<br>115 - 122 cm | 49" - 52"<br>125 - 132 cm | 53" - 56"<br>135 - 142 cm |



Available in 9" and 12" widths with single and multi-flap closure to deliver symmetric or asymmetric pressure to the surgical area



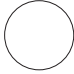

ADJUSTABLE HOOK & LOOP CLOSURES  
 TAPERED CORNERS  
 INNER COTTON LINING



**#729 - 9" ABDOMINAL BINDER**  
 Single panel closure



**#730 - 12" ABDOMINAL BINDER**  
 Single panel closure

| # Style    |  |  |
|------------|---|---|
| <b>729</b> | SM - 2XL  | SM - 2XL  |
| <b>730</b> | SM - 2XL  | SM - 2XL  |
| <b>731</b> | SM - 2XL  | SM - 2XL  |
| <b>732</b> | SM - 2XL  | SM - 2XL  |



**#732 - 12" TRI FLAP ABDOMINAL BINDER**  
 Three separate panels

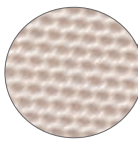


**#731 - 9" DUAL FLAP ABDOMINAL BINDER**  
 Two separate panels

|              | S                       | M                       | L                       | XL                       | 2XL                       |
|--------------|-------------------------|-------------------------|-------------------------|--------------------------|---------------------------|
| <b>WAIST</b> | 20" - 27"<br>51 - 68 cm | 28" - 34"<br>71 - 86 cm | 35" - 38"<br>89 - 97 cm | 39" - 44"<br>99 - 112 cm | 45" - 50"<br>114 - 127 cm |

Multi-functional styles for men and women featuring multiple row hook & eye closure for adjustable compression, as well as zippered and pull-on styles.





POWERNET



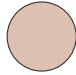

**#288 - FEMALE COMPRESSION VEST**

Three row adjustable front hook and eye closure  
40 MM band



**#388 - SURGICAL VEST**

Three row adjustable front hook and eye closure  
40 MM band

| # Style    |  |  |
|------------|---|---|
| <b>288</b> | SM - 2XL  | N/A   |
| <b>388</b> | XS - 3XL  | XS - 3XL  |
| <b>500</b> | SM - 2XL  | SM - XL   |
| <b>501</b> | SM - 2XL  | N/A   |

Size chart page 30



**#501 - ARM SLEEVES**

Front stretch hook and loop closures

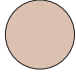



**#500 - COMPRESSION VEST WITH SLEEVES**

Three row adjustable front hook and eye closure  
Cotton lined protective under arm panels  
40 MM band



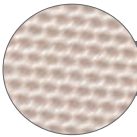
MICROFIBER

| # Style |  |  |
|---------|---|---|
| 286     | SM - 2XL  | XS - 2XL  |
| 287     | XS - 2XL  | SM - 2XL  |
| 289     | N/A   | SM - XL   |

Size chart page 30



**#289 - SLEEVELESS PULLOVER VEST**  
Seamless design



POWERNET



**#286 - COMPRESSION VEST WITH ZIPPER**  
Front zipper with hook and eye cotton guard tape  
Wide adjustable hook and loop straps

**#287 - MALE COMPRESSION VEST**  
Three row adjustable front hook and eye closure  
Wide adjustable hook and loop straps



#288

#388

#500

#501

|                  | XS<br>Style 388 Only    | S                       | M                       | L                        | XL                        | 2XL                       | 3XL<br>Style 288 Only     |
|------------------|-------------------------|-------------------------|-------------------------|--------------------------|---------------------------|---------------------------|---------------------------|
| <b>UPPER ARM</b> | 7" - 8"<br>18 - 20 cm   | 9" - 10"<br>23 - 26 cm  | 11" - 12"<br>28 - 31 cm | 13" - 14"<br>33 - 36 cm  | 15" - 16"<br>38 - 41 cm   | 17" - 18"<br>43 - 46 cm   | 19" - 20"<br>47 - 50 cm   |
| <b>BUST</b>      | 27" - 29"<br>68 - 74 cm | 30" - 32"<br>76 - 81 cm | 33" - 36"<br>84 - 91 cm | 37" - 40"<br>94 - 102 cm | 41" - 44"<br>104 - 112 cm | 45" - 48"<br>115 - 122 cm | 49" - 52"<br>123 - 131 cm |



#286

#287

#289

|              | XS                      | S                       | M                        | L                         | XL                        | 2XL                       |
|--------------|-------------------------|-------------------------|--------------------------|---------------------------|---------------------------|---------------------------|
| <b>CHEST</b> | 29" - 32"<br>74 - 81 cm | 33" - 36"<br>83 - 92 cm | 37" - 40"<br>94 - 102 cm | 41" - 44"<br>104 - 112 cm | 45" - 48"<br>115 - 122 cm | 49" - 52"<br>125 - 132 cm |
| <b>WAIST</b> | 23" - 26"<br>58 - 66 cm | 27" - 30"<br>68 - 77 cm | 31" - 34"<br>79 - 86 cm  | 35" - 37"<br>89 - 94 cm   | 39" - 42"<br>99 - 106 cm  | 43" - 46"<br>109 - 117 cm |



Facial and breast wraps are made in a microfiber or soft cotton lined stretch fabric with hook & loop closure.



**#227 - BREAST WRAP**

3" x 35 1/4" cotton lined adjustable stretch band  
One size / white



**#225 - BREAST WRAP WITH LACE**

3" x 35 1/4" cotton lined adjustable stretch band  
One size / black



**#228 - UNIVERSAL FACIAL WRAP**

3" x 29 1/2" cotton lined adjustable stretch band  
One size / white



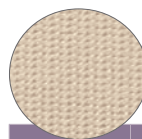
**#226 - CHIN AND NECK BAND**

Adjustable / detachable stabilizing stretch bands  
One size / white



**#701 - FACE LIFT WRAP**

Closures at neck and top of head  
Covers ears



MICROFIBER

|             | S            | M            | L            | XL           |
|-------------|--------------|--------------|--------------|--------------|
| <b>HEAD</b> | 20"<br>50 cm | 22"<br>56 cm | 24"<br>61 cm | 26"<br>66 cm |
| <b>NECK</b> | 14"<br>36 cm | 15"<br>38 cm | 16"<br>41 cm | 17"<br>43 cm |

# Style



**701**

SM - XL

**702**

SM - XL



**#702 - CHIN AND NECK WRAP**

Closures at neck and top of head  
Contours ears



**#911 - LIPO FOAM SHEET**

Polyurethane foam

Each pad measures: 7.75 x 11.5 x .5 in

No gel or silicone backing

Sold individually



**#213 - MODESTY PANTY**

Disposable exam panty - for pre-op

Marking/Post-op coverage

One size

Sold in a package of 45 units



**#912 - LIPO FOAM ROLL**

Polyurethane foam

Each pad measures: 35 x 11 x .5 in

No gel or silicone backing

Sold individually



BRAS



Pages 6-9

#710 #711 #275 #276 #216 #218



Pages 10-11

#217 #220 #277 #312

SHAPEWEAR



Pages 14-15

#740 #780 #750 #721 #722 #723 #724

Page 16

#370 #371

Page 17

#440 #460



Pages 18-21

#822 #830 #820 #810 #341 #361 #320 #340 #360



#470 #472

Pages 24

BINDERS



#729



#730



#731



#732

Page 26

VESTS & SLEEVES



#288



#388



#500



#501

Page 28



#286



#287



#289

Page 29

WRAPS



#225



#226



#227



#228



#701



#702

Page 32

MARKETPLACE



#213



#911



#912

Page 33



CLEARPOINT MEDICAL®

COMPRESSION WEAR

[CLEARPOINTMD.COM](https://CLEARPOINTMD.COM)

Telephone: 514.631.4555

Toll Free: 866.694.7799

Fax: 514.631.8885

USA - 30 Lawrence Paquette Drive, Champlain, NY 12919

Canada - 2317, 46th Ave. Lachine, QC H8T 3C9



©2022 ClearPoint Medical